

## HLDA9 ANTIBODY VALIDATION FILE

### ANTIBODY INFORMATION

**Antibody Name:** 152512

**Specificity:** CD360, Human IL21R

**Antibody species:** Mouse

**Ig Isotype:** IgG1

**Immunogen:**

**Epitope recognized:**

**Submitter:** R&D Systems

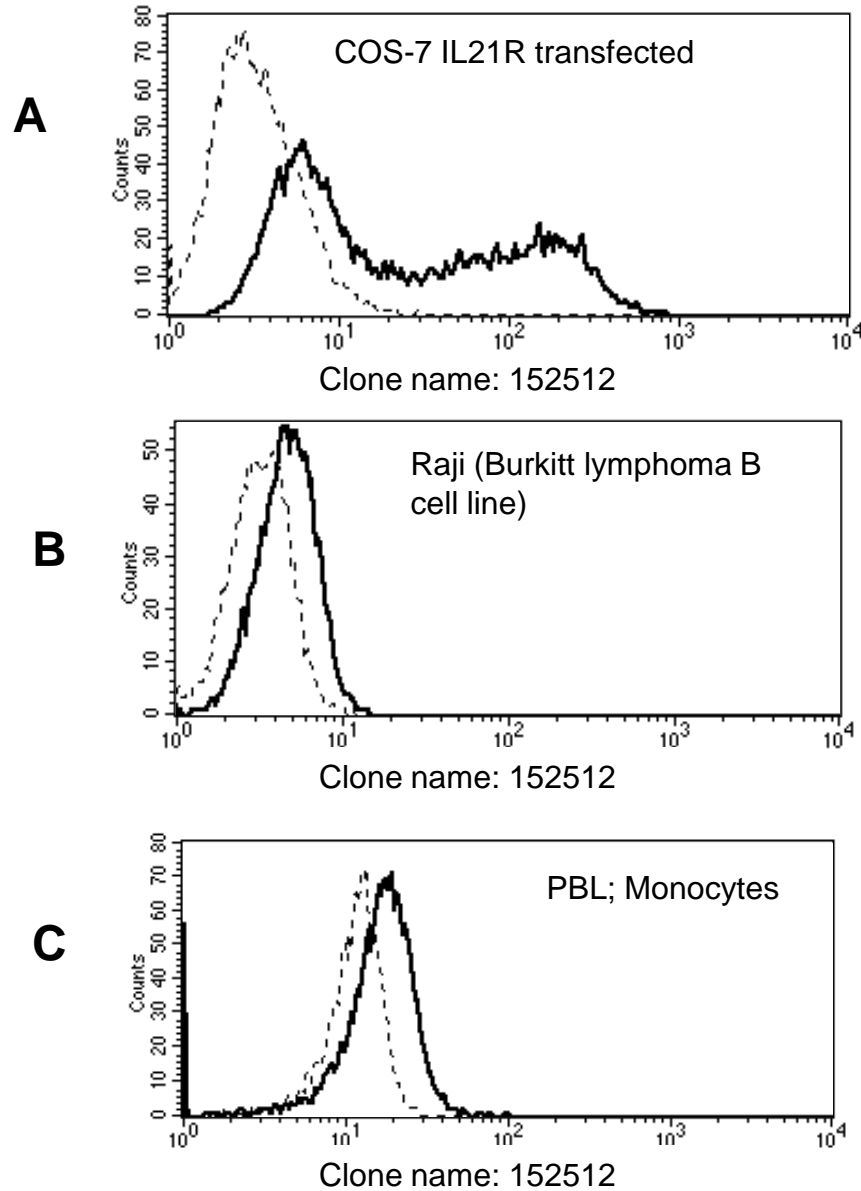
### INFORMATION FOR CONFIRMATION OF SPECIFICITY:

Expression on transfected COS: positive. (Fig. 1A)

Expression on the cell- surface of cell line: positive with Burkitt lymphoma B cell line Raji. (Fig. 1B)

Expression on cell- surface of normal cell: positive in PBL's Monocyte cells. (Fig. 1C)

**Figure 1:**



Reactivity of CD360 with cell lines

	Cell lines	CD360
Burkitt lymphoma B cell lines	Raji	+
	Daudi	+
T cell leukemia	Jurkat	-
NK cell leukemia	YT	-
Myeloid leukemia	HL-60	-
	U-937	-

Reactivity of CD360 with PBL

Lymphocytes	-
Granulocytes	-
Monocytes	++

## **INFORMATION PROVIDED BY SUBMITTER**

### **Publications:**

Kis LL, Salamon D, Persson EK, Nagy N, Scheeren FA, Spits H, Klein G, Klein E. IL-21 imposes a type II EBV gene expression on type III and type I B cells by the repression of C- and activation of LMP-1-promoter. Proc Natl Acad Sci U S A. 2010 Jan 12;107(2):872-7.

Jahrsdörfer B, Blackwell SE, Wooldridge JE, Huang J, Andreski MW, Jacobus LS, Taylor CM, Weiner GJ. B-chronic lymphocytic leukemia cells and other B cells can produce granzyme B and gain cytotoxic potential after interleukin-21-based activation. Blood. 2006 Oct 15;108(8):2712-9.

### **Patents:**

**Licensed to a company and which one:** R&D Systems

**Was it evaluated in a previous workshop?** No