

HLDA9 ANTIBODY VALIDATION FILE

ANTIBODY INFORMATION

Antibody Name: CTSU-CD22-2

Specificity: Human CD22

Antibody species: Mouse

Ig Isotype: IgG1

Immunogen: rCD22

Epitope recognized: Different epitope recognized from that recognized by MoAb CTSU-CD22-1 and 4KB128. Same epitope recognized as by MoAb CTSU-CD22-8

Submitter: David J Flavell (Leukaemia Busters, Southampton Hospital, UK)

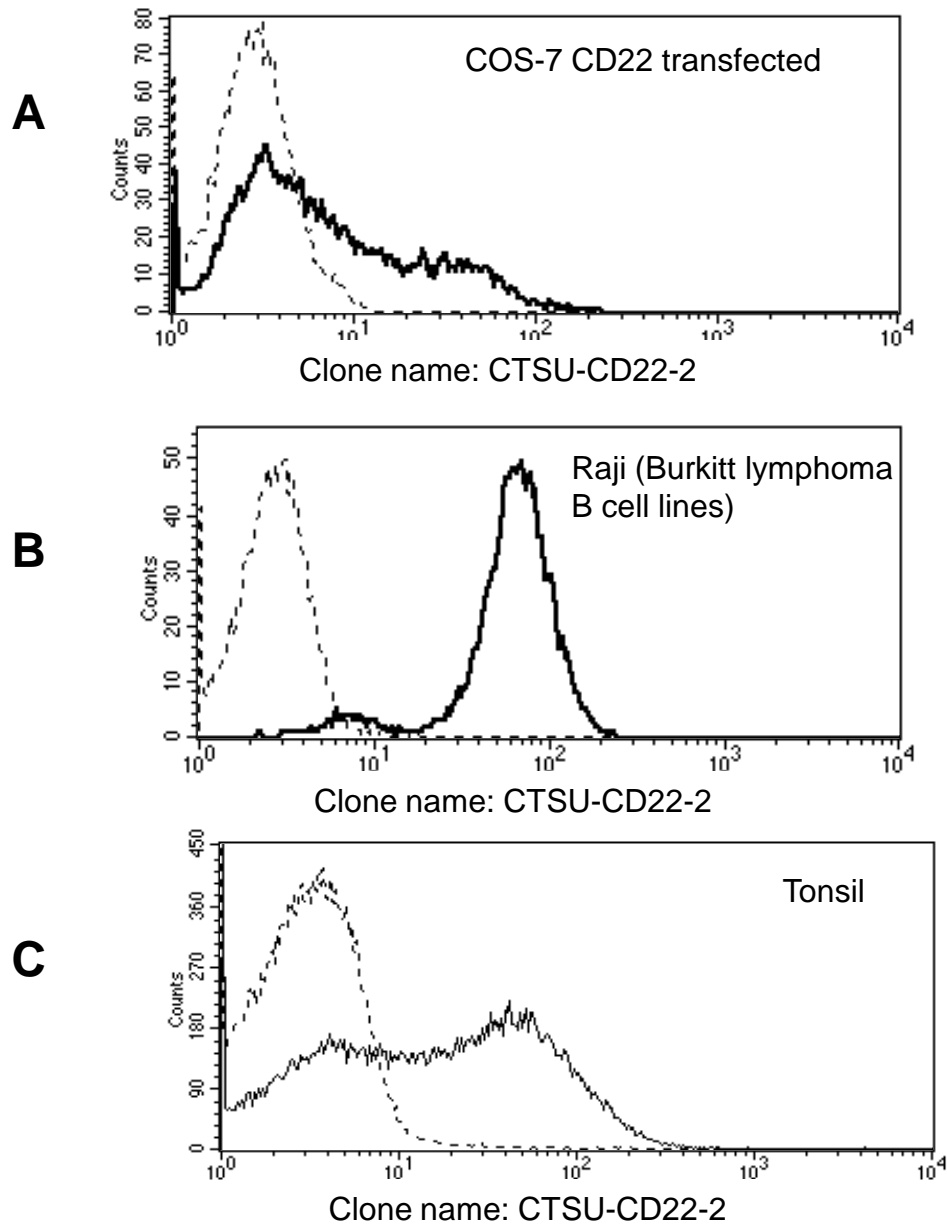
INFORMATION FOR CONFIRMATION OF SPECIFICITY:

Expression on transfected COS: positive. (Fig. 1A)

Expression on the cell- surface of cell line: positive with Burkitt lymphoma B cell line Raji. (Fig. 1B)

Expression on cell- surface of normal cell: positive with tonsil cells. (Fig. 1C)

Figure 1:

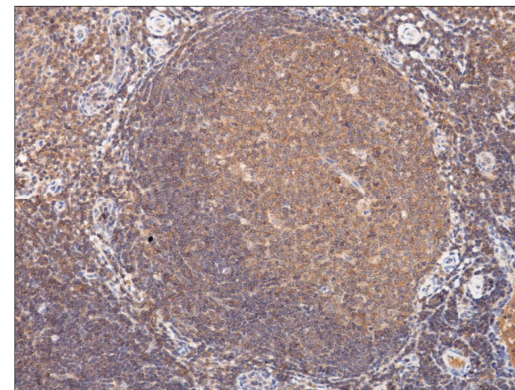


Reactivity of CD22 with cell lines

	Cell lines	CD22
Burkitt lymphoma B cell lines	Raji	++++
T cell leukemia	Jurkat	-
NK cell leukemia	YT	-
Myeloid leukemia	HL-60	-

Reactivity of CD22 with PBL

Lymphocytes	-
Granulocytes	-
Monocytes	-



Expression in paraffin human reactive tonsil: CTSU-CD22-2

INFORMATION PROVIDED BY SUBMITTER

Publications: none

Patents: none

Licensed to a company and which one: none

Was it evaluated in a previous workshop? No