

HLDA9 ANTIBODY VALIDATION FILE

ANTIBODY INFORMATION

Antibody Name: 210213

Specificity: CD355, Human CRTAM

Antibody species: Mouse

Ig Isotype: IgG2b

Immunogen:

Epitope recognized:

Submitter: R&D Systems

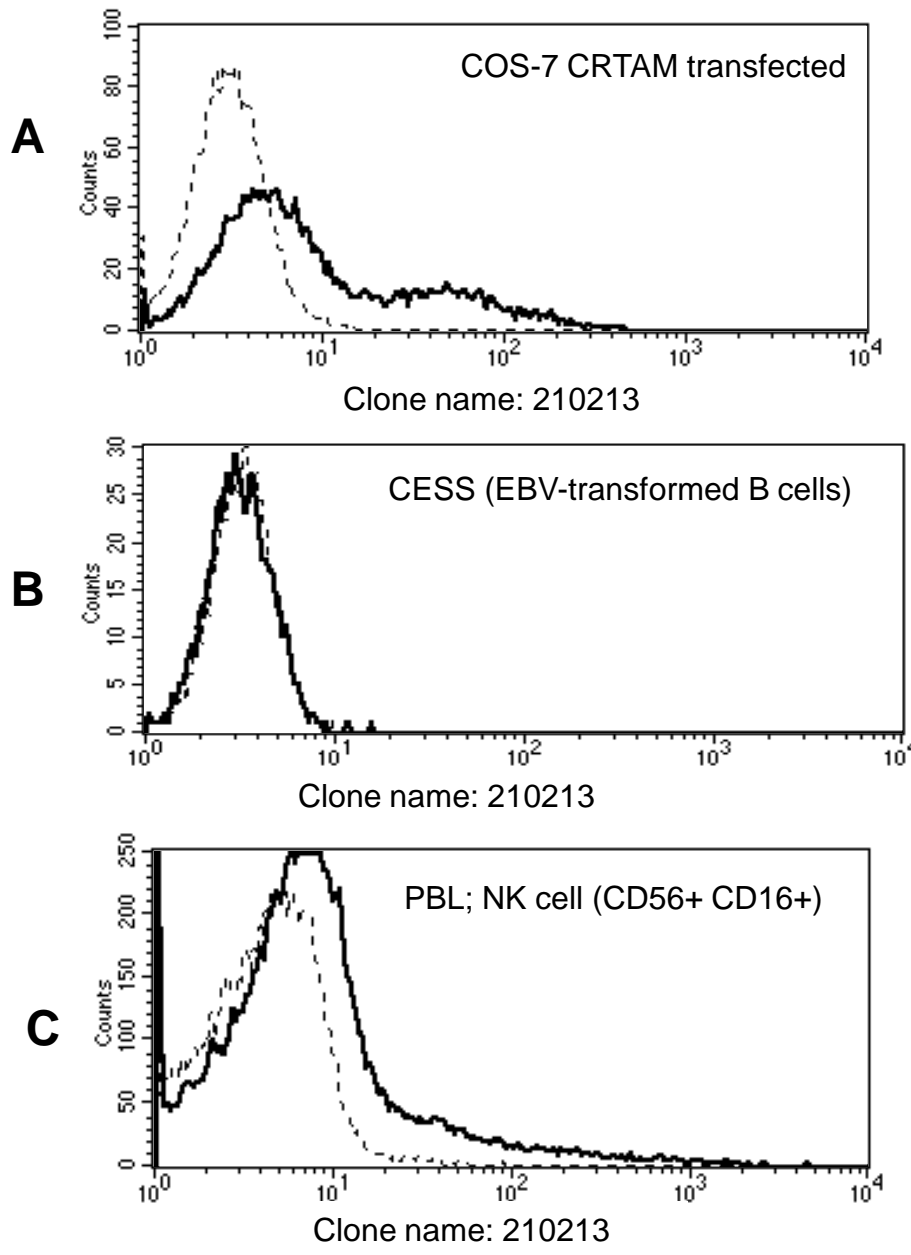
INFORMATION FOR CONFIRMATION OF SPECIFICITY:

Expression on transfected COS: positive. (Fig. 1A)

Expression on the cell- surface of cell line: Negative. (Fig. 1B)

Expression on cell- surface of normal cell: positive in PBL's NK cells. (Fig. 1C)

Figure 1:



Reactivity of CD355 with cell lines

	Cell lines	CD355
EBV-transformed B cells	CESS	-
Burkitt lymphoma B cell lines	Raji	-
	Daudi	-
	Namalwa	-
	Ramos	-
Multiple myeloma	RPMI8226	-
T cell leukemia	Jurkat	-
	HSB2	-
NK cell leukemia	YT	-
Myeloid leukemia	HL-60	-
	K-562	-
	U-937	-

Reactivity of CD355 with PBL

Lymphocytes	+
Granulocytes	-
Monocytes	-

INFORMATION PROVIDED BY SUBMITTER

Publications:

Patiño-Lopez G, Hevezi P, Lee J, Willhite D, Verge GM, Lechner SM, Ortiz-Navarrete V, Zlotnik A. Human class-I restricted T cell associated molecule is highly expressed in the cerebellum and is a marker for activated NKT and CD8+ T lymphocytes. J Neuroimmunol. 2006 Feb;171(1-2):145-55.

Patents:

Licensed to a company and which one: R&D Systems

Was it evaluated in a previous workshop? No