

HLDA9 ANTIBODY VALIDATION FILE

ANTIBODY INFORMATION

Antibody Name: 193015

Specificity: CD354, Human TREM1.

Antibody species: Mouse

Ig Isotype: IgG1

Immunogen:

Epitope recognized:

Submitter: R&D Systems

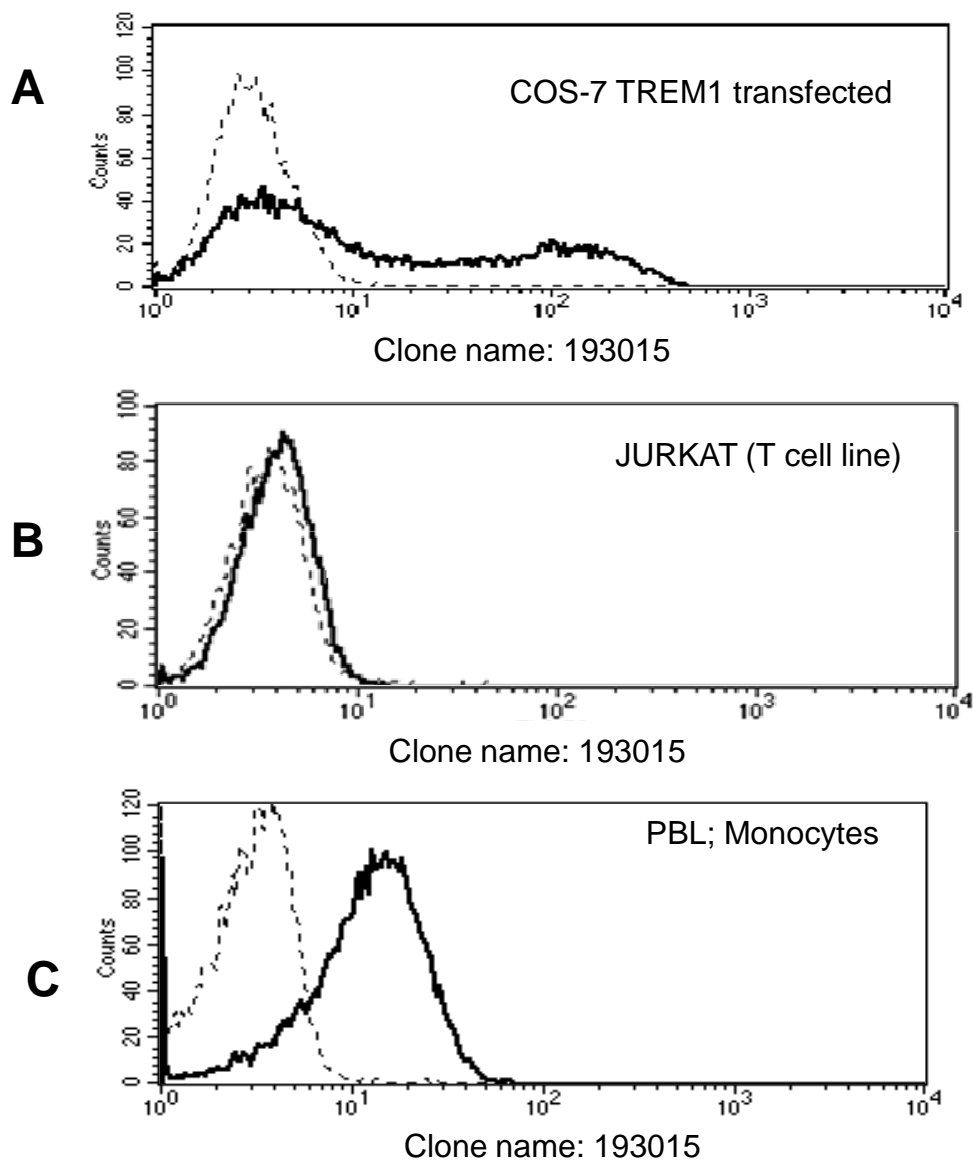
INFORMATION FOR CONFIRMATION OF SPECIFICITY:

Expression on transfected COS: positive. (Fig. 1A)

Expression on the cell- surface of cell line: Negative. (Fig. 1B)

Expression on cell- surface of normal cell: positive with PBL's Monocytes. (Fig. 1C)

Figure 1:



Reactivity of CD254 with cell lines

	Cell lines	CD254
EBV-transformed B cells	CESS	-
Burkitt lymphoma B cell lines	Raji	-
	Daudi	-
	Namalwa	-
	Ramos	-
Multiple myeloma	RPMI8226	-
T cell leukemia	Jurkat	-
	HSB2	-
NK cell leukemia	YT	-
Myeloid leukemia	HL-60	-
	K-562	-
	U-937	-

Reactivity of CD354 with PBL

Lymphocytes	-
Granulocytes	-
Monocytes	+++

INFORMATION PROVIDED BY SUBMITTER

Publications:

Fortin CF, Lesur O, Fulop T Jr. Effects of TREM-1 activation in human neutrophils: activation of signaling pathways, recruitment into lipid rafts and association with TLR4. *Int Immunol.* 2007 Jan;19(1):41-50.

Netea MG, Azam T, Ferwerda G, Girardin SE, Kim SH, Dinarello CA. Triggering receptor expressed on myeloid cells-1 (TREM-1) amplifies the signals induced by the NACHT-LRR (NLR) pattern recognition receptors. *J Leukoc Biol.* 2006 Dec;80(6):1454-61.

Collins CE, La DT, Yang HT, Massin F, Gibot S, Faure G, Stohl W. Elevated synovial expression of triggering receptor expressed on myeloid cells 1 in patients with septic arthritis or rheumatoid arthritis. *Ann Rheum Dis.* 2009 Nov;68(11):1768-74.

Ingersoll MA, Spanbroek R, Lottaz C, Gautier EL, Frankenberger M, Hoffmann R, Lang R, Haniffa M, Collin M, Tacke F, Habenicht AJ, Ziegler-Heitbrock L, Randolph GJ. Comparison of gene expression profiles between human and mouse monocyte subsets. *Blood.* 2010 Jan 21;115(3):e10-9.

Patents:

Licensed to a company and which one: R&D Systems

Was it evaluated in a previous workshop? no