

## HLDA9 ANTIBODY VALIDATION FILE

### ANTIBODY INFORMATION

**Antibody Name:** 122

**Specificity:** CD270, Human HVEM, TNFRSF14.

**Antibody species:** Mouse

**Ig Isotype:** IgG1(kappa)

**Immunogen:**

**Epitope recognized:**

**Submitter:** BioLegend

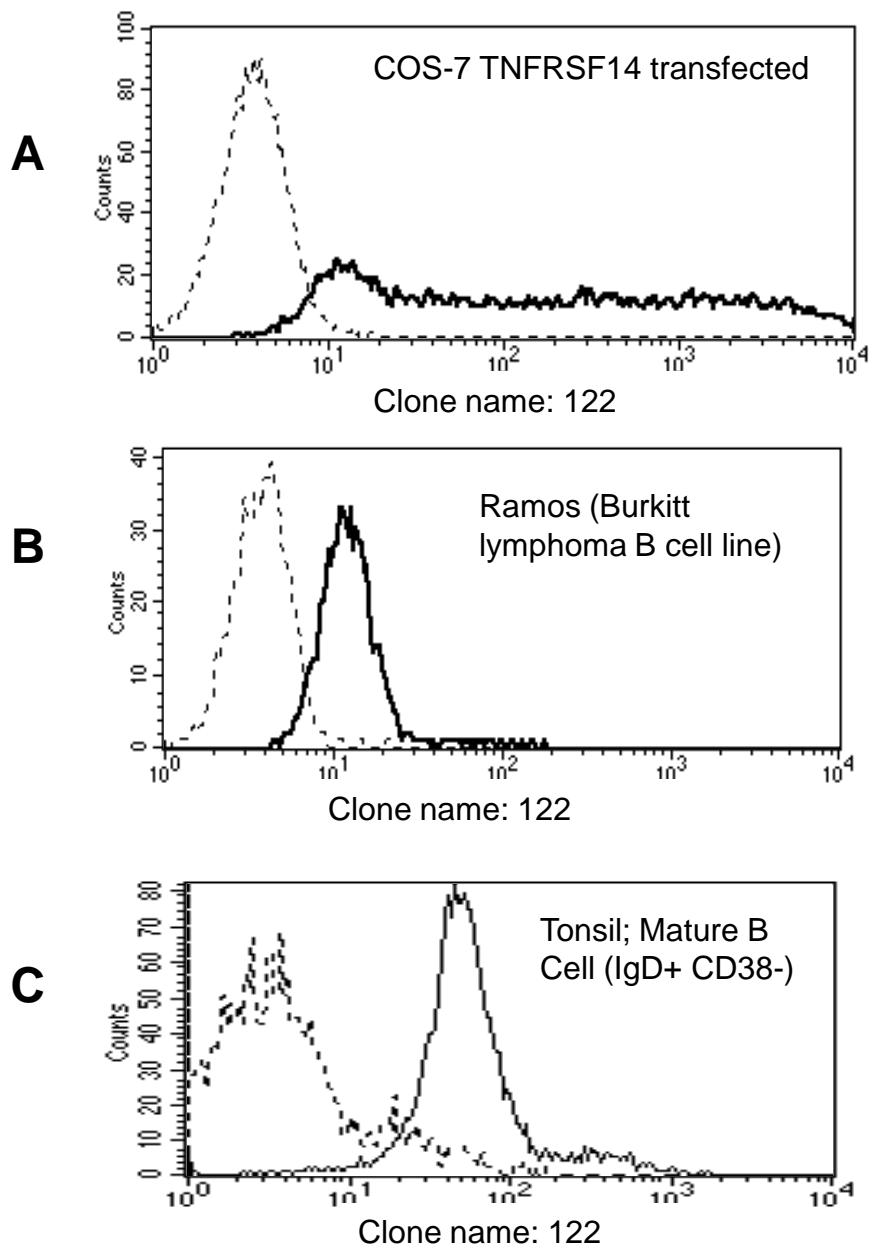
### INFORMATION FOR CONFIRMATION OF SPECIFICITY:

Expression on transfected COS: positive. (Fig. 1A)

Expression on the cell- surface of cell line: positive with Burkitt lymphoma B cell line Ramos.  
(Fig. 1B)

Expression on cell- surface of normal cell: positive with tonsil Mature B cells (IgD+ CD38-).  
(Fig. 1C)

**Figure 1:**



Reactivity of CD270 with cell lines

	Cell lines	CD270
EBV-transformed B cells	CESS	+++++
Burkitt lymphoma B cell lines	Raji	++++
	Daudi	+++
	Namalwa	++++
	Ramos	++++
Multiple myeloma	RPMI8226	+++
T cell leukemia	Jurkat	++++
	HSB2	++++
NK cell leukemia	YT	++++
Myeloid leukemia	HL-60	++
	K-562	+++
	U-937	++

Reactivity of CD270 with PBL

Lymphocytes	-
Granulocytes	++++
Monocytes	++++

## **INFORMATION PROVIDED BY SUBMITTER**

### **Publications:**

Cheung TC, Osborne LM, Steinberg MW, Macauley MG, Fukuyama S, Sanjo H, D'Souza C, Norris PS, Pfeffer K, Murphy KM, Kronenberg M, Spear PG, Ware CF. T cell intrinsic heterodimeric complexes between HVEM and BTLA determine receptivity to the surrounding microenvironment. J Immunol. 2009 Dec 1;183(11):7286-96.

### **Patents:**

**Licensed to a company and which one:** BioLegend

**Was it evaluated in a previous workshop?** No